

## Bi-telecentric Objectives

Bi-telezentrische Objektiv

*Objectifs Bi-Télécentrique*

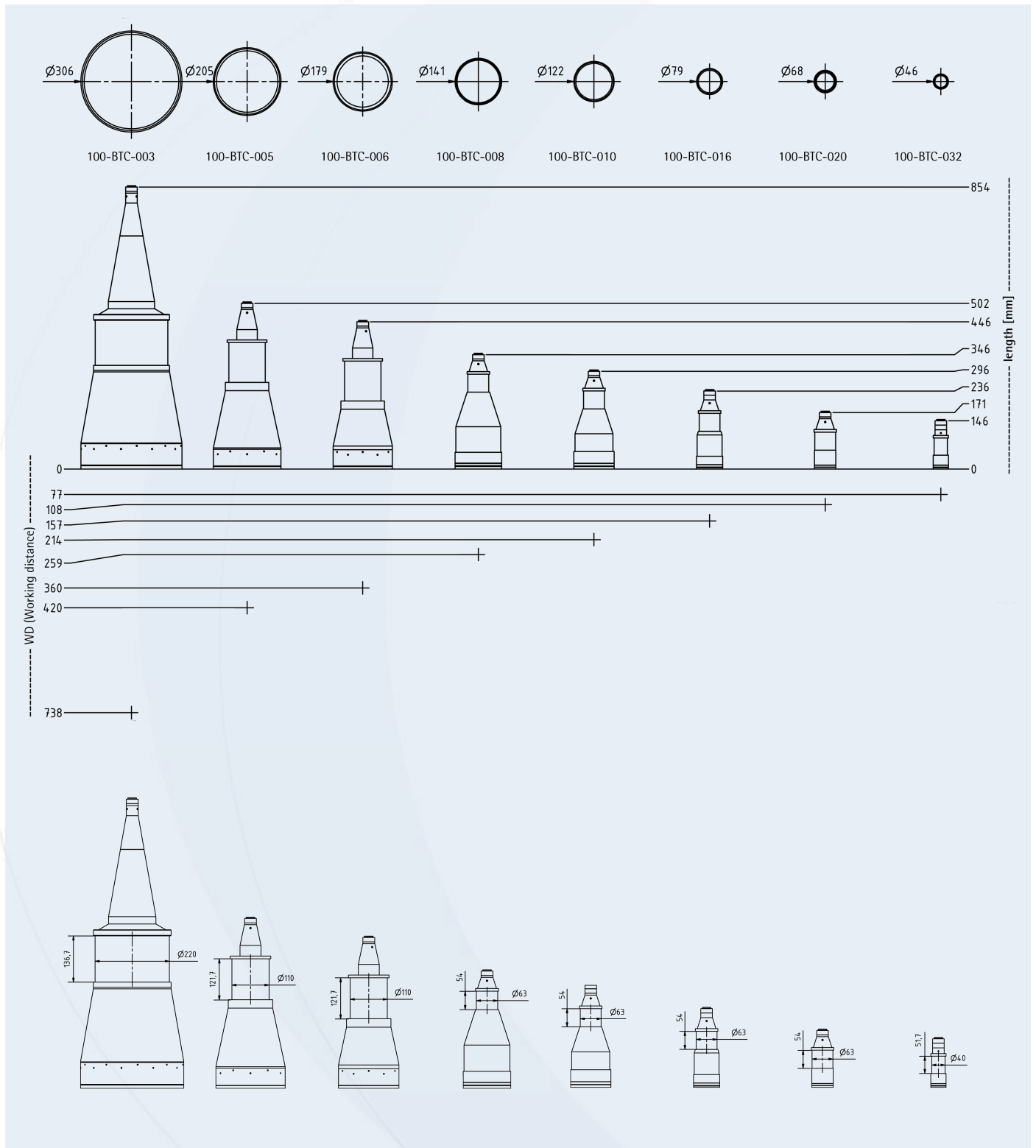


## Specifications

| Article No.         | 100-BTC-003 | 100-BTC-005 | 100-BTC-006 | 100-BTC-008 | 100-BTC-010 | 100-BTC-016 | 100-BTC-020 | 100-BTC-032 |
|---------------------|-------------|-------------|-------------|-------------|-------------|-------------|-------------|-------------|
| Magnification       | 0.03        | 0.05        | 0.06        | 0.08        | 0.1         | 0.16        | 0.2         | 0.32        |
| Exact magnification | 0.0293      | 0.051       | 0.06        | 0.081       | 0.098       | 0.157       | 0.2         | 0.317       |
| 1/2" FOV            | 218x163     | 125x94.1    | 106.7x80    | 79x59.2     | 65x49       | 40.7x30.5   | 32x24       | 20.1x15.1   |
| 1/1.8" FOV          | 242x180     | 138x104     | 118x89      | 88x65       | 72x54       | 45x33.8     | 35x27       | 22.3x16.7   |
| 2/3" FOV*           | 290x218     | 167x125     | 142x106     | 105x79      | 86x65       | 54x40.5     | 42.5x32     | 26.7x20     |
| F/#                 | 8           | 8           | 8           | 8           | 8           | 8           | 8           | 8           |
| MTF@70LP/MM         | 50          | 50          | 50          | 50          | 50          | 50          | 45          | 45          |
| Depth of focus [mm] | 780         | 253         | 186         | 101         | 68          | 27          | 17          | 7           |
| Telecentricity [°]  | 0.05        | 0.08        | 0.08        | 0.08        | 0.08        | 0.08        | 0.08        | 0.08        |
| Distortion [%]      | 0.05        | 0.07        | 0.07        | 0.07        | 0.07        | 0.08        | 0.08        | 0.08        |
| Total tube length   | 854         | 502         | 446         | 346         | 296         | 236         | 171         | 146         |
| W.D.                | 738         | 420         | 360         | 259         | 214         | 157         | 108         | 77          |
| Clamp diameter [mm] | 220         | 110         | 110         | 63          | 63          | 63          | 63          | 40          |
| Clamp length [mm]   | 136.7       | 120.7       | 120.8       | 54.5        | 54.5        | 54.5        | 54.5        | 52          |
| Mount               | C           | C           | C           | C           | C           | C           | C           | C           |

\* with Vignetting effects on 4 corners

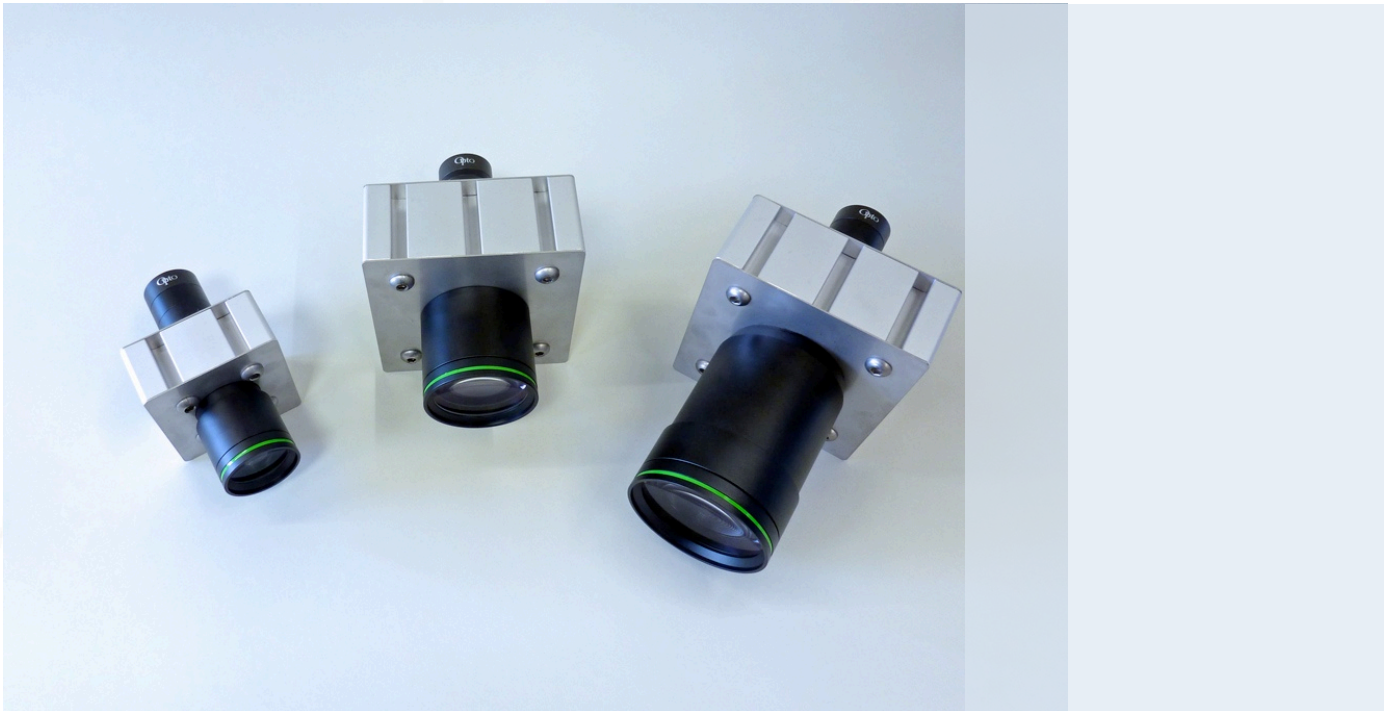
## Technical Drawing



## Bi-telecentric QuadraMount-Objectives

Bi-telezentrische QuadraMount-Objektive

*QuadraMount-Objectifs Bi-Télécentrique*



### Specifications

| Article No.         | 100-BTC-005-P | 100-BTC-006-P | 100-BTC-008-P | 100-BTC-010-P | 100-BTC-016-P | 100-BTC-020-P | 100-BTC-032-P |
|---------------------|---------------|---------------|---------------|---------------|---------------|---------------|---------------|
| Magnification       | 0.05          | 0.06          | 0.08          | 0.1           | 0.16          | 0.2           | 0.32          |
| Exact magnification | 0.051         | 0.06          | 0.081         | 0.098         | 0.157         | 0.2           | 0.317         |
| 1/2" FOV            | 125x94.1      | 106.7x80      | 79x59.2       | 65x49         | 40.7x30.5     | 32x24         | 20.1x15.1     |
| 1/1.8" FOV          | 139x104       | 118x89        | 88x65         | 72x54         | 45x33.8       | 35x27         | 22.3x16.7     |
| 2/3" FOV*           | 167x125       | 142x106       | 105x79        | 86x65         | 54x40.5       | 42.5x32       | 26.7x20       |
| F/#                 | 8             | 8             | 8             | 8             | 8             | 8             | 8             |
| MTF@70LP/MM         | 50            | 50            | 50            | 50            | 50            | 45            | 45            |
| Depth of focus [mm] | 253           | 186           | 101           | 68            | 27            | 17            | 7             |
| Telecentricity [°]  | 0.08          | 0.08          | 0.08          | 0.08          | 0.08          | 0.08          | 0.08          |
| Distortion [%]      | 0.07          | 0.07          | 0.07          | 0.07          | 0.08          | 0.08          | 0.08          |
| Total tube length   | 502           | 446           | 346           | 296           | 236           | 171           | 146           |
| W.D.                | 420           | 360           | 259           | 214           | 157           | 108           | 77            |
| Mount               | C             | C             | C             | C             | C             | C             | C             |

\* with Vignetting effects on 4 corners

## Technical Drawing

