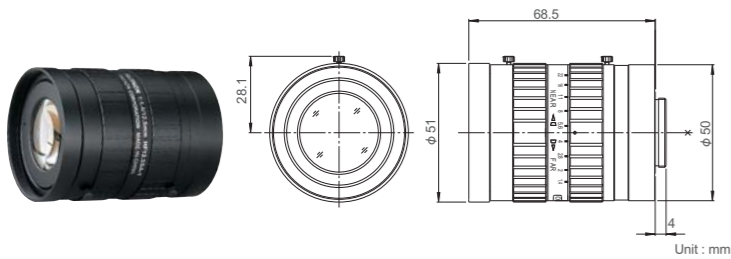


For FA/Machine Vision Fixed Focal

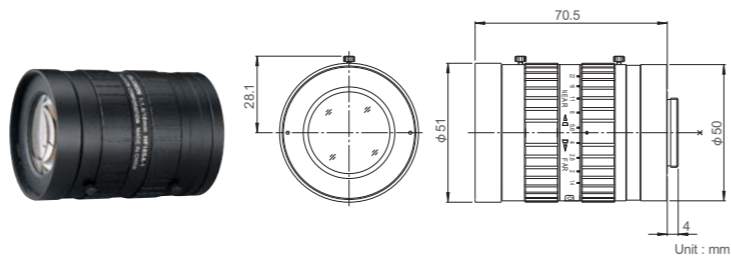
HF12.5SA-1

FIXED 5 Mega MANUAL C-mnt METAL F1.4



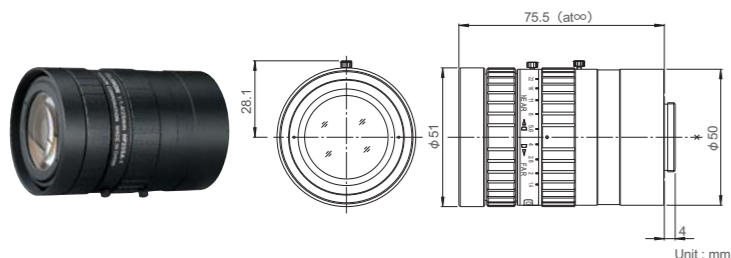
HF16SA-1

FIXED 5 Mega MANUAL C-mnt METAL F1.4



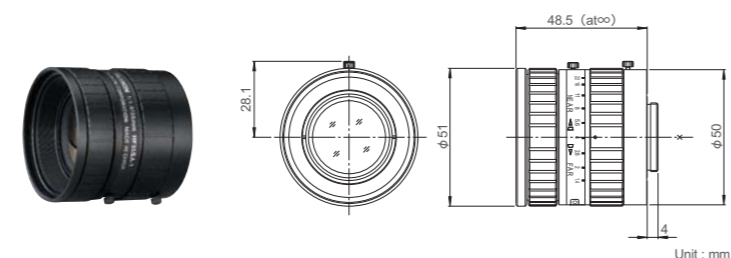
HF25SA-1

FIXED 5 Mega MANUAL C-mnt METAL F1.4



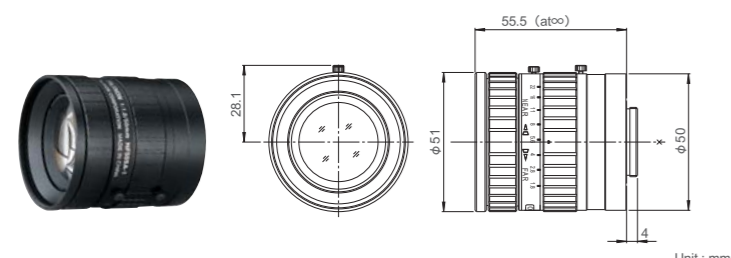
HF35SA-1

FIXED 5 Mega MANUAL C-mnt METAL F1.4



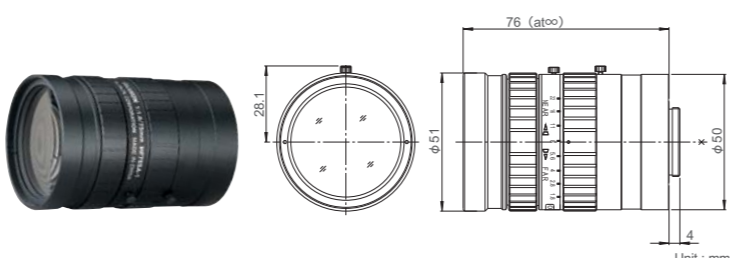
HF50SA-1

FIXED 5 Mega MANUAL C-mnt METAL



HF75SA-1

FIXED 5 Mega MANUAL C-mnt METAL



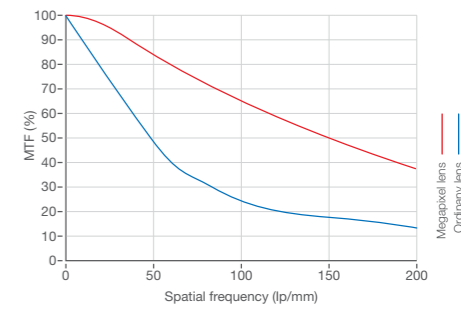
Feature Indications

- FIXED** Fixed Focal
High performance single focal lens for the best image quality
- 5 Mega** For Megapixel Camera
For 5 Megapixel Camera
- MANUAL** Manual Iris
Manually-operated iris
- C-mnt** C Mount
Screw-in mounting commonly used in FA lenses
- F1.4** Wide Aperture Rate
Lens with the wide aperture rate, optimizing the sensitivity of cameras
- METAL** Metal Mount
Metal mounting with high accuracy and durability

- 🔒 ... With locking knob for iris and focus
- 📏 ... Using an extension tube longer than 5mm the M.O.D. will increase to 0.3m
- 📏 ... Using an extension tube longer than 5mm the M.O.D. will increase to 0.5m

Megapixel Supporting Lens

We have realized a high resolution, compact, and lightweight lens supporting to megapixel by thoroughly reducing aberrations based on design technology cultivated from broadcast TV lenses. The chart shown at the right compares megapixel supporting lens and the MTF of an ordinary CCTV lens. As the number of TV lines increases, the disparity in MTF becomes bigger.



	HF12.5SA-1	HF16SA-1	HF25SA-1	HF35SA-1	HF50SA-1	HF75SA-1
Focal Length (mm)	12.5	16	25	35	50	75
Iris Range	F1.4-F22	F1.4-F22	F1.4-F22	F1.4-F22	F1.8-F22	F1.8-F22
Operation	Focus	Manual	Manual	Manual	Manual	Manual
	Iris	Manual	Manual	Manual	Manual	Manual
Angle Of View (H×V)	2/3"	38°47' × 29°35'	30°45' × 23°18'	19°58' × 15°02'	14°20' × 10°46'	10°03' × 7°33'
	1/2"	28°43' × 21°44'	22°37' × 17°04'	14°35' × 10°58'	10°27' × 7°51'	7°19' × 5°30'
	1/3"	21°44' × 16°23'	17°04' × 12°50'	10°58' × 8°14'	7°51' × 5°53'	5°30' × 4°07'
Focusing Range (From Front Of The Lens) (m)	∞ ~ 0.1	∞ ~ 0.1	∞ ~ 0.1	∞ ~ 0.2	∞ ~ 0.4	∞ ~ 0.9
	2/3"	83 × 62	69 × 51	44 × 33	50 × 38	70 × 52
Object Dimensions at M.O.D. (H×V) (mm)	1/2"	60 × 45	50 × 37	32 × 24	37 × 27	51 × 38
	1/3"	45 × 34	37 × 28	24 × 18	27 × 21	38 × 28
	1/3"	45 × 34	37 × 28	24 × 18	27 × 21	38 × 28
Back Focal Distance (in air) (mm)	16.07	17.99	22.32	14.99	17.81	24.43
Exit Pupil Position (From Image Plane) (mm)	-101	-172	-140	-37	-49	-52
Filter Thread (mm)	M49 × 0.75	M49 × 0.75	M49 × 0.75	M49 × 0.75	M49 × 0.75	M49 × 0.75
Mount	C	C	C	C	C	C
Mass (g)	295	285	315	185	240	305
Remarks	With Metal Mount	With Metal Mount	With Metal Mount	With Metal Mount	With Metal Mount	With Metal Mount