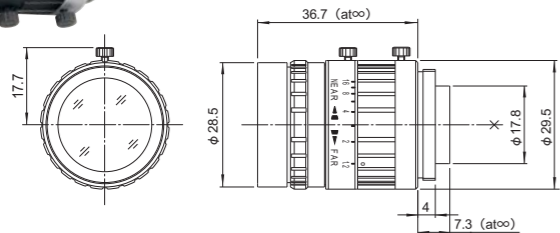


# For FA/Machine Vision Fixed Focal

## DF6HA-1B

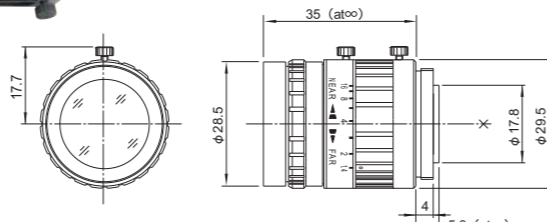
FIXED WIDE 1.5 Mega MANUAL C-mt METAL F1.2



Unit : mm

## HF9HA-1B

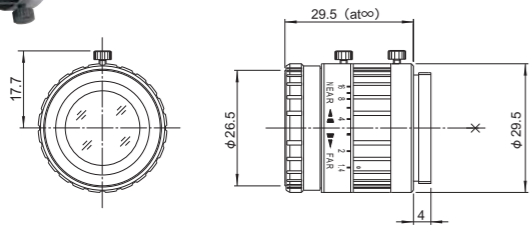
FIXED WIDE 1.5 Mega MANUAL C-mt METAL F1.4



Unit : mm

## HF12.5HA-1B

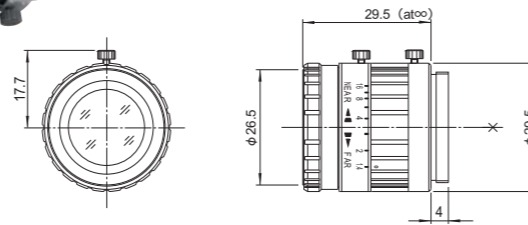
FIXED 1.5 Mega MANUAL C-mt METAL F1.4



Unit : mm

## HF16HA-1B

FIXED 1.5 Mega MANUAL C-mt METAL F1.4



Unit : mm

### Feature Indications

- FIXED** Fixed Focal  
High performance single focal lens for the best image quality
- WIDE** Wide Angle  
Wide angle lens which ensures wide field of view
- MANUAL** Manual Iris  
Manually-operated iris
- 1.5 Mega** For Megapixel Camera  
For 1.5 Megapixel Camera
- C-mt** C Mount  
Screw-in mounting commonly used in FA lenses
- METAL** Metal Mount  
Metal mounting with high accuracy and durability
- F1.4** Wide Aperture Rate  
Lens with the wide aperture rate, optimizing the sensitivity of cameras
- Locking Knob** With locking knob for iris and focus

### Model Explanation

Image Size	<b>H</b>	<b>F</b>	<b>9</b>	<b>HA-1</b>	<b>SA-1</b>
		Fixed Focal	Focal Length	Megapixel Support	5 megapixel
D ...1/2"	H ...2/3"	C ...1"			<b>HA-1B</b>
					1.5 megapixel

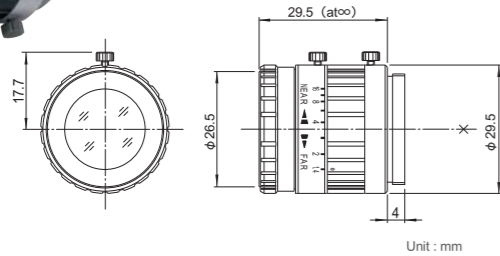
### 1.5 Megapixel

- High-resolution design, providing support for up to 1.5 megapixel camera resolution.
- Low-distortion design achieving accurate image input.
- Focus & iris lock tab provided, supporting environments such as vibration.

	DF6HA-1B		HF9HA-1B		HF12.5HA-1B		HF16HA-1B		
Focal Length (mm)	6		9		12.5		16		
Iris Range	F1.2~F16		F1.4~F16		F1.4~F16		F1.4~F16		
Operation	Focus	Manual		Manual		Manual		Manual	
	Iris	Manual		Manual		Manual		Manual	
Angle Of View (HxV)	1/2"	56°09' × 43°36'	2/3"	52°06' × 40°16'	2/3"	38°47' × 29°35'	2/3"	30°45' × 23°18'	
	1/3"	43°36' × 33°24'	1/2"	39°09' × 29°52'	1/2"	28°43' × 21°44'	1/2"	22°37' × 17°04'	
	1/4"	33°24' × 25°22'	1/3"	29°52' × 22°37'	1/3"	21°44' × 16°23'	1/3"	17°04' × 12°50'	
Focusing Range (From Front Of The Lens) (m)	∞ ~ 0.1		∞ ~ 0.1		∞ ~ 0.1		∞ ~ 0.1		
Object Dimensions at M.O.D. (HxV) (mm)	1/2"	122 × 92	2/3"	108 × 81	2/3"	78 × 58	2/3"	63 × 47	
	1/3"	92 × 69	1/2"	79 × 59	1/2"	57 × 42	1/2"	46 × 34	
	1/4"	69 × 52	1/3"	59 × 44	1/3"	42 × 32	1/3"	34 × 26	
Back Focal Distance (in air) (mm)	11.44		13.48		15.09		15.15		
Exit Pupil Position (From Image Plane) (mm)	-46		-28		-31		-31		
Filter Thread (mm)	M27 × 0.5		M27 × 0.5		M25.5 × 0.5		M25.5 × 0.5		
Mount	C		C		C		C		
Mass (g)	55		55		45		45		
Remarks	With Metal Mount		With Metal Mount		With Metal Mount		With Metal Mount		

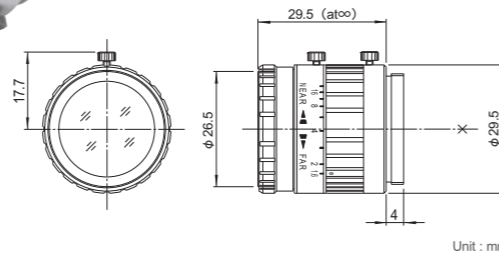
# For FA/Machine Vision Fixed Focal

## HF25HA-1B



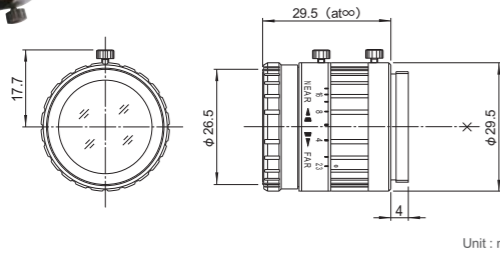
Unit : mm

## HF35HA-1B



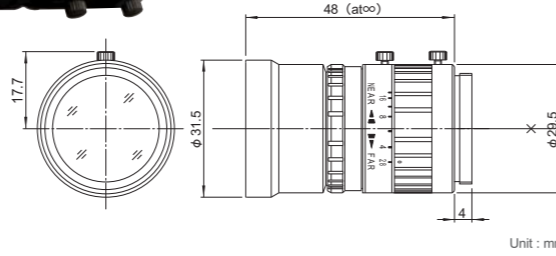
Unit : mm

## HF50HA-1B



Unit : mm

## HF75HA-1B



Unit : mm

### Feature Indications

- FIXED** Fixed Focal  
High performance single focal lens for the best image quality
- 1.5 Mega** For Megapixel Camera  
For 1.5 Megapixel Camera
- MANUAL** Manual Iris  
Manually-operated iris
- METAL** Metal Mount  
Metal mounting with high accuracy and durability
- F1.4 F1.6** Wide Aperture Rate  
Lens with the wide aperture rate, optimizing the sensitivity of cameras
- C-mt** C Mount  
Screw-in mounting commonly used in FA lenses

... With locking knob for iris and focus

### Model Explanation

Image Size	<b>H</b>	<b>F</b>	<b>25</b>	<b>HA-1</b>	<b>SA-1</b> 5 megapixel
<b>D</b> ...1/2" <b>H</b> ...2/3" <b>C</b> ...1"	Fixed Focal	Focal Length	Megapixel Support	<b>HA-1B</b> 1.5 megapixel	

### 1.5 Megapixel

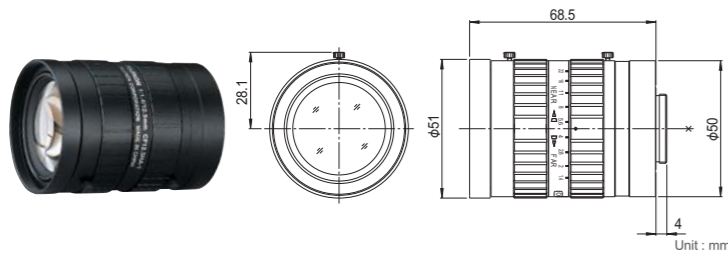
- High-resolution design, providing support for up to 1.5 megapixel camera resolution.
- Low-distortion design achieving accurate image input.
- Focus & iris lock tab provided, supporting environments such as vibration.

	HF25HA-1B	HF35HA-1B	HF50HA-1B	HF75HA-1B
Focal Length (mm)	25	35	50	75
Iris Range	F1.4-F16	F1.6-F22	F2.3-F22	F2.8-F22
Operation	Focus	Manual	Manual	Manual
	Iris	Manual	Manual	Manual
Angle Of View (H×V)	2/3"	19°58' × 15°02'	14°20' × 10°46'	10°03' × 7°33'
	1/2"	14°35' × 10°58'	10°27' × 7°51'	7°19' × 5°30'
	1/3"	10°58' × 8°14'	7°51' × 5°53'	5°30' × 4°07'
Focusing Range (From Front Of The Lens) (m)	∞ ~ 0.15	∞ ~ 0.25	∞ ~ 0.5	∞ ~ 1.1
Object Dimensions at M.O.D. (H×V) (mm)	2/3"	53 × 40	59 × 44	77 × 57
	1/2"	38 × 29	43 × 32	56 × 42
	1/3"	29 × 22	32 × 24	42 × 31
Back Focal Distance (in air) (mm)	14.58	15.03	15.26	15.74
Exit Pupil Position (From Image Plane) (mm)	-32	-27	-25	-27
Filter Thread (mm)	M25.5 × 0.5	M25.5 × 0.5	M25.5 × 0.5	M30.5 × 0.5
Mount	C	C	C	C
Mass (g)	45	45	45	55
Remarks	With Metal Mount	With Metal Mount	With Metal Mount	With Metal Mount

# For FA/Machine Vision Fixed Focal

## CF12.5HA-1

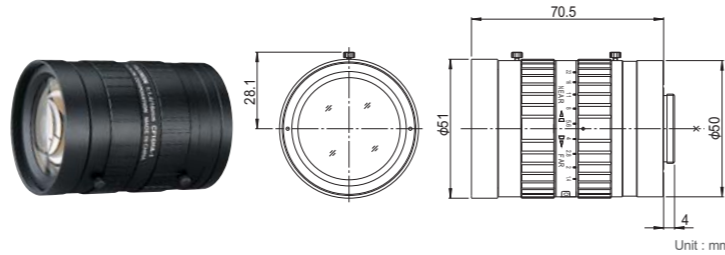
FIXED 1.5 Mega MANUAL C-mt METAL F1.4



Unit : mm

## CF16HA-1

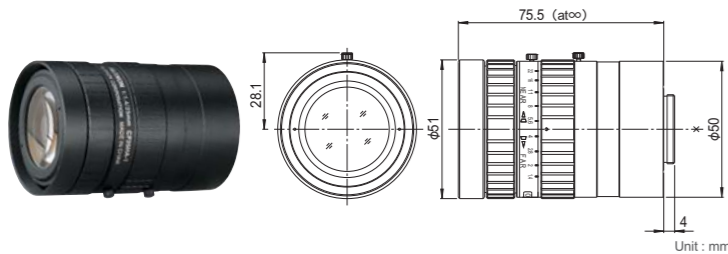
FIXED 1.5 Mega MANUAL C-mt METAL F1.4



Unit : mm

## CF25HA-1

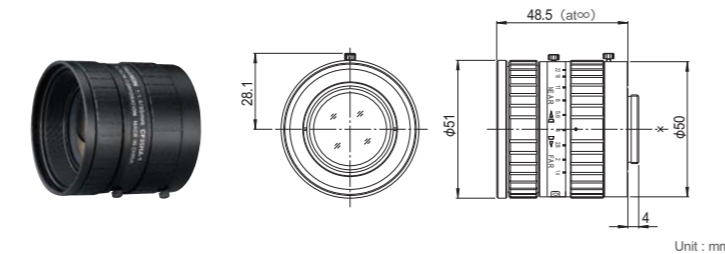
FIXED 1.5 Mega MANUAL C-mt METAL F1.4



Unit : mm

## CF35HA-1

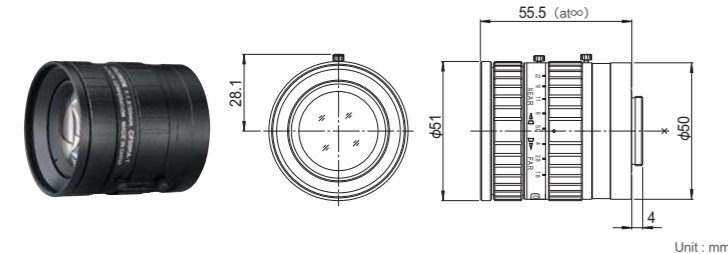
FIXED 1.5 Mega MANUAL C-mt METAL F1.4



Unit : mm

## CF50HA-1

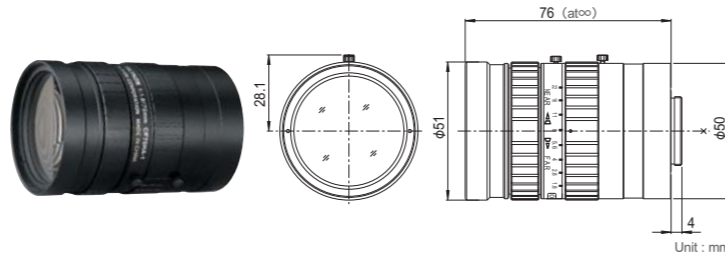
FIXED 1.5 Mega MANUAL C-mt METAL



Unit : mm

## CF75HA-1

FIXED 1.5 Mega MANUAL C-mt METAL



Unit : mm

## Feature Indications

- FIXED** Fixed Focal  
High performance single focal lens for the best image quality
- 1.5 Mega** For Megapixel Camera  
For 1.5 Megapixel Camera
- MANUAL** Manual Iris  
Manually-operated iris
- C-mt** C Mount  
Screw-in mounting commonly used in FA lenses
- F1.4** Wide Aperture Rate  
Lens with the wide aperture rate, optimizing the sensitivity of cameras
- METAL** Metal Mount  
Metal mounting with high accuracy and durability

- ... With locking knob for iris and focus
- ... Using an extension tube longer than 5mm the M.O.D. will increase to 0.3m
- ... Using an extension tube longer than 5mm the M.O.D. will increase to 0.5m

## Model Explanation

Image Size	<b>C</b>	<b>F</b>	<b>12.5</b>	<b>HA-1</b>	<b>SA-1</b> 5 megapixel
<b>D</b> ...1/2" <b>H</b> ...2/3" <b>C</b> ...1"	Fixed Focal	Focal Length	Megapixel Support	<b>HA-1B</b> 1.5 megapixel	

## 1.5 Megapixel

- High-resolution design, providing support for up to 1.5 megapixel camera resolution.
- Low-distortion design achieving accurate image input.
- Focus & iris lock tab provided, supporting environments such as vibration.

	CF12.5HA-1	CF16HA-1	CF25HA-1	CF35HA-1	CF50HA-1	CF75HA-1
Focal Length (mm)	12.5	16	25	35	50	75
Iris Range	F1.4-F22	F1.4-F22	F1.4-F22	F1.4-F22	F1.8-F22	F1.8-F22
Operation	Focus	Manual	Manual	Manual	Manual	Manual
	Iris	Manual	Manual	Manual	Manual	Manual
Angle Of View (HxV)	1"	54°13' x 42°01'	43°36' x 33°24'	28°43' x 21°44'	20°43' x 15°37'	14°35' x 10°58'
	2/3"	38°47' x 29°35'	30°45' x 23°18'	19°58' x 15°02'	14°20' x 10°46'	10°03' x 7°33'
	1/2"	28°43' x 21°44'	22°37' x 17°04'	14°35' x 10°58'	10°27' x 7°51'	7°19' x 5°30'
Focusing Range (From Front Of The Lens) (m)	∞ ~ 0.1	∞ ~ 0.1	∞ ~ 0.1	∞ ~ 0.2	∞ ~ 0.4	∞ ~ 0.9
Object Dimensions at M.O.D. (HxV) (mm)	1"	120 x 90	100 x 75	65 x 48	73 x 55	101 x 76
	2/3"	83 x 62	69 x 51	44 x 33	50 x 38	70 x 52
	1/2"	60 x 45	50 x 37	32 x 24	37 x 27	51 x 38
Back Focal Distance (in air) (mm)	16.07	17.99	22.32	14.99	17.81	24.43
Exit Pupil Position (From Image Plane) (mm)	-101	-172	-140	-37	-49	-52
Filter Thread (mm)	M49 x 0.75	M49 x 0.75	M49 x 0.75	M49 x 0.75	M49 x 0.75	M49 x 0.75
Mount	C	C	C	C	C	C
Mass (g)	290	280	310	180	235	300
Remarks	With Metal Mount	With Metal Mount	With Metal Mount	With Metal Mount	With Metal Mount	With Metal Mount