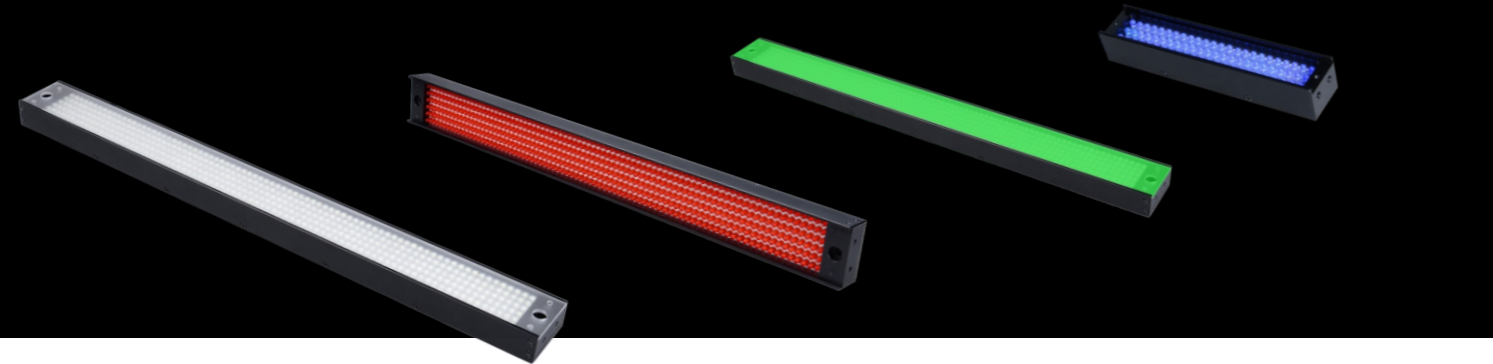


Bar Light OPT-LI series

Bar light is easy to be customized in color and size, it is suitable for large square object inspection



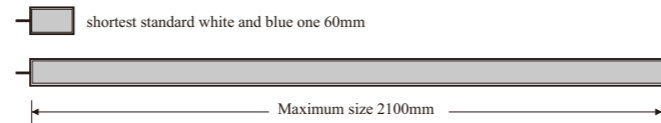
Various colors, satisfying different application demands, it is easy to be customized in size and color

The best choice for the large square illumination

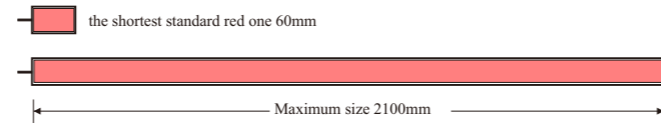
Special heat transferring design, multi-option illumination angles and installation way



The shortest standard one of white and blue color is 35mm, the longest standard one is 2100mm, other length can be customized easily



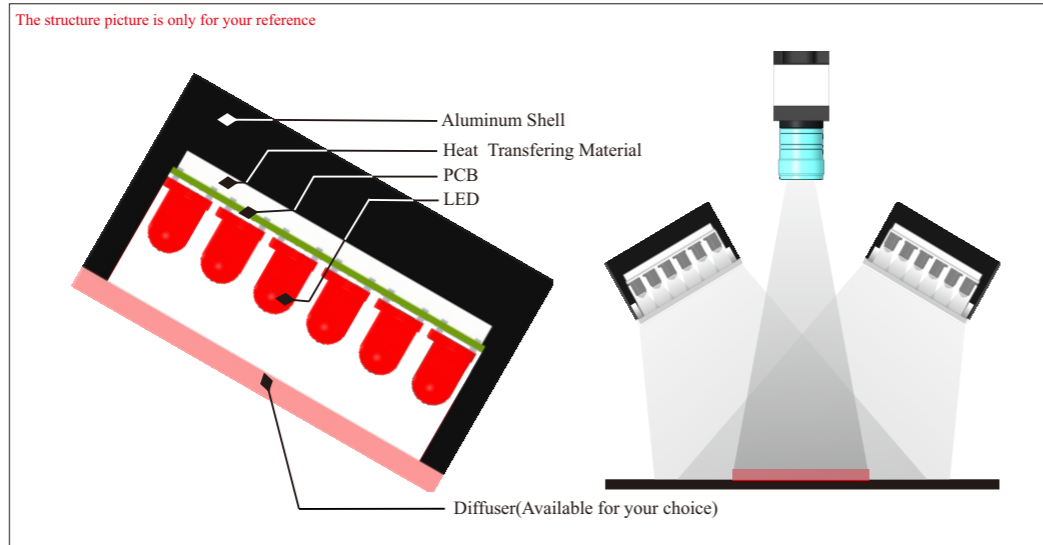
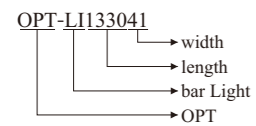
the shortest of red color is 60mm, and longest one is 2100mm. other length can be customized easily



Application Area

- ◆ Metal Surface inspection
- ◆ Image scan
- ◆ Surface crack detection
- ◆ LCD panel inspection, etc.

Selection guide



Structure display and working way

Application example



Model Table

Model	Rows of LEDs	Output Power ●●○	Output Power ●●●	Color	Size
OPT-LI4033	6	24V/1.7W	24V/0.9W	●●●	1
OPT-LI5218	3	24V/1.7W	24V/0.9W	●●●	2
OPT-LI6022	3	24V/0.8W	24V/0.8W	●●●	3
OPT-LI8532	6	24V/2.7W	24V/1.9W	●●●	4
OPT-LI9022	3	24V/1.3W	24V/0.7W	●●●	5
OPT-LI10810	1	24V/0.7W	24V/0.5W	●●●	6
OPT-LI11222	3	24V/2.1W	24V/1.2W	●●●	7
OPT-LI11830	6	24V/3.6W	24V/3.5W	●●●	8
OPT-LI14030	6	24V/4.8W	24V/4.9W	●●●	9
OPT-LI15020	3	24V/2.8W	24V/1.6W	●●●	10
OPT-LI16030	6	24V/5.8W	24V/2.1W	●●●	11
OPT-LI18022	3	24V/4.3W	24V/2.6W	●●●	12
OPT-LI19030	6	24V/7.2W	24V/4.6W	●●●	13
OPT-LI21222	3	24V/6.0W	24V/3.8W	●●●	14
OPT-LI21230	6	24V/7.2W	24V/4.8W	●●●	15
OPT-LI23034	6	24V/10.4W	24V/12.0W	●●●	16
OPT-LI25030	6	24V/8.6W	24V/6.1W	●●●	17

Model	Rows of LEDs	Output Power ●●○	Output Power ●●●	Color	Size
OPT-LI27022	3	24V/7.0W	24V/4.0W	●●●	18
OPT-LI29026	3	24V/5.0W	24V/2.4W	●●●	19
OPT-LI33037	6	24V/12.0W	24V/6.2W	●●●	20
OPT-LI35030	6	24V/13.0W	24V/8.6W	●●●	21
OPT-LI38037	6	24V/13.5W	24V/7.2W	●●●	22
OPT-LI48031	5	24V/14.4W	24V/12.0W	●●●	23
OPT-LI58041	6	24V/26.0W	24V/12.0W	●●●	24
OPT-LI71678	12	24V/47.9W	24V/33.6W	●●●	25
OPT-LI88041	6	24V/37.5W	24V/19.2W	●●●	26
OPT-LI112028	3	24V/24.0W	24V/15.6W	●●●	27
OPT-LI133041	6	24V/62.4W	24V/38.4W	●●●	28
OPT-LI152050	6	24V/67.2W	24V/43.2W	●●●	29
OPT-LI180853	6	24V/105.6W	24V/57.6W	●●●	30
OPT-LI202453	6	24V/116.2W	24V/62.4W	●●●	31
OPT-LI257050	6	24V/127.2W	24V/76.8W	●●●	32
OPT-LI549353	6	24V/264.0W	24V/134.4W	●●●	33

Dimensional drawings(mm)

High Uniformity Bar Light OPT-LIT series

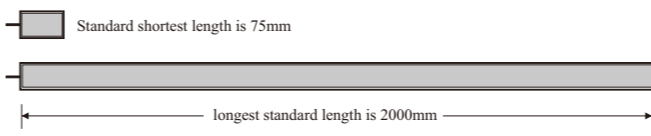
21 OPT-LI35030 	22 OPT-LI38037 	23 OPT-LI48031 	24 OPT-LI58041
25 OPT-LI71678 	26 OPT-LI88041 	27 OPT-LI112028 	28 OPT-LI133041
29 OPT-LI152050 	30 OPT-LI180853 	31 OPT-LI202453 	32 OPT-LI257050
33 OPT-LI549353 	Screw groove detail for 22mm width 	Screw groove detail for 30mm width 	

High uniformity bar light series can be combined freely, and can be widely-applied for various application.

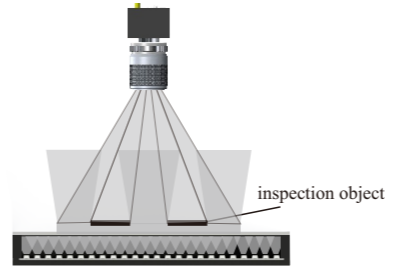


Standard length is from 75mm to 2000mm

Other size can be customized easily
different colors can be combined into one light



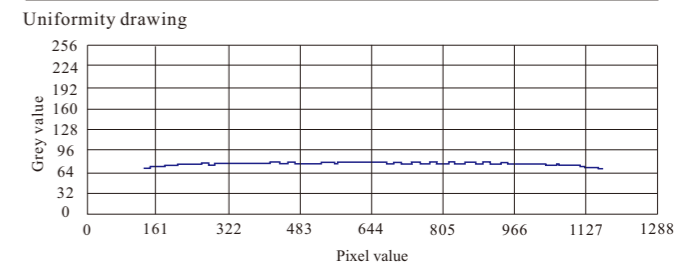
Can be used as back light



Application Area

- ◆ Electronic components identification
- ◆ Apparel & textiles application
- ◆ Printing inspection
- ◆ Surface inspection of the home appliance
- ◆ Cylinder objects surface inspection
- ◆ The package inspection
- ◆ For the general illumination
- ◆ The replacement of the fluorescent lamps

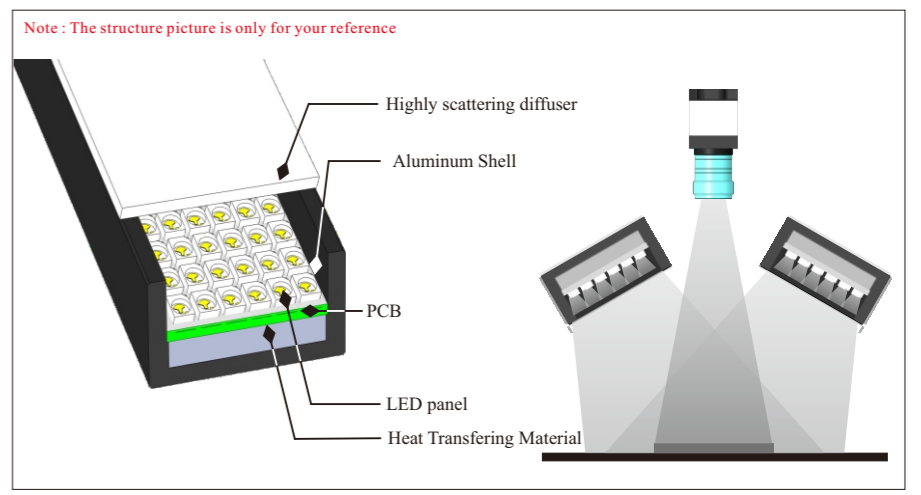
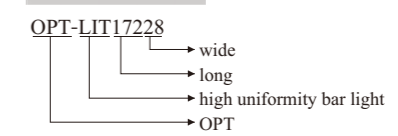
High uniformity



Use CCD camera to grab picture, and then analysis the grey value. above drawing is the average grey value

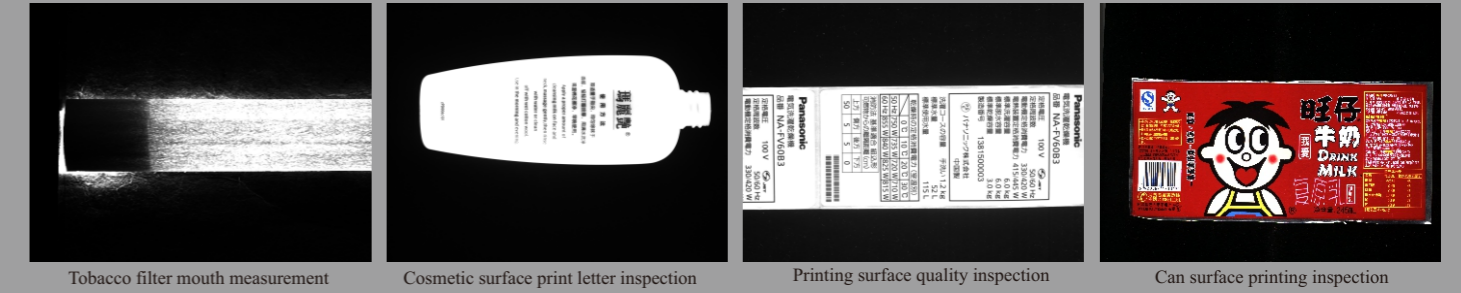
Above data is just for reference

Selection Guide



Structure display and working way

Application example



Tobacco filter mouth measurement

Cosmetic surface print letter inspection

Printing surface quality inspection

Can surface printing inspection

Model Table

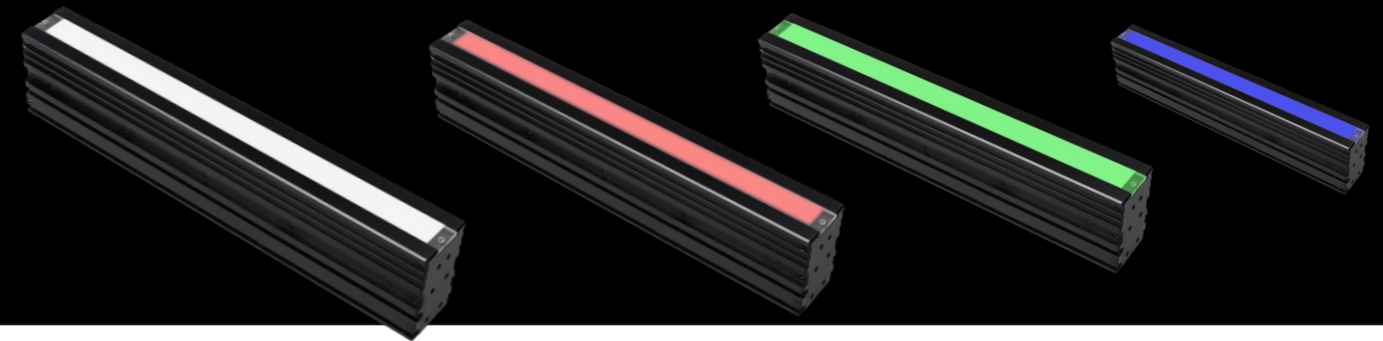
Model	Output Power ●●○	Output Power ●	Color	Size
OPT-LIT6022	24V/0.9W	24V/0.6W	●●○●	1
OPT-LIT11828	24V/3.5W	24V/1.7W	●●○●	2
OPT-LIT17228	24V/3.1W	24V/2.0W	●●○●	3
OPT-LIT21228	24V/7.2W	24V/3.4W	●●○●	4
OPT-LIT25128	24V/5.3W	24V/5.0W	●●○●	5
OPT-LIT29028	24V/7.0W	24V/4.6W	●●○●	6
OPT-LIT32928	24V/7.2W	24V/5.0W	●●○●	7
OPT-LIT38037	24V/12.7W	24V8.0W	●●○●	8
OPT-LIT50028	24V/12.7W	24V/8.0W	●●○●	9
OPT-LIT74128	24V/18.4W	24V/11.6W	●●○●	10
OPT-LIT88028	24V/21.3W	24V/15.0W	●●○●	11
OPT-LIT92428	24V/23.0W	24V/16.8W	●●○●	12
OPT-LIT126928	24V/28.8W	24V/19.2W	●●○●	13
OPT-LIT145028	24V/33.6W	24V/24.0W	●●○●	14
OPT-LIT212728	24V/48.0W	24V/33.6W	●●○●	15

Dimensional drawings (mm)

1 	2 	3 	4
5 	6 	7 	8
9 	10 	11 	12
13 	14 	15 	

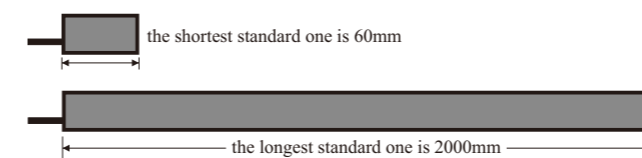
High Power Bar Light OPT-LIG series New

using high power LED, intensity is 3 times higher than standard one



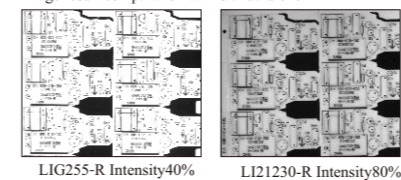
Emitting surface standard size can be made from 60mm to 2000mm

The shortest standard one of white,blue,green color is 60mm, the longest standard one is 1980mm; the shortest standard one of red color is 100mm, the longest standard one is 2000mm



other size can be customized easily
high power LED with very compact array

Image result comparison with standard one



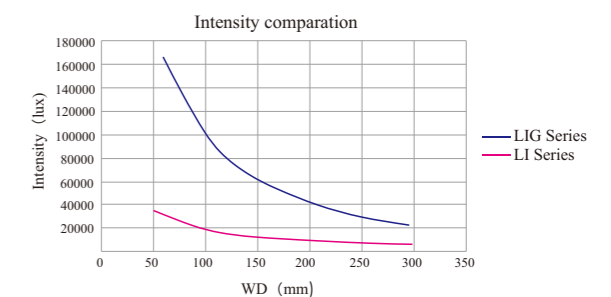
Application Area

- ◆ Long work distance illumination
- ◆ High speed on line illumination
- ◆ Big FOV illumination

Selection Guide

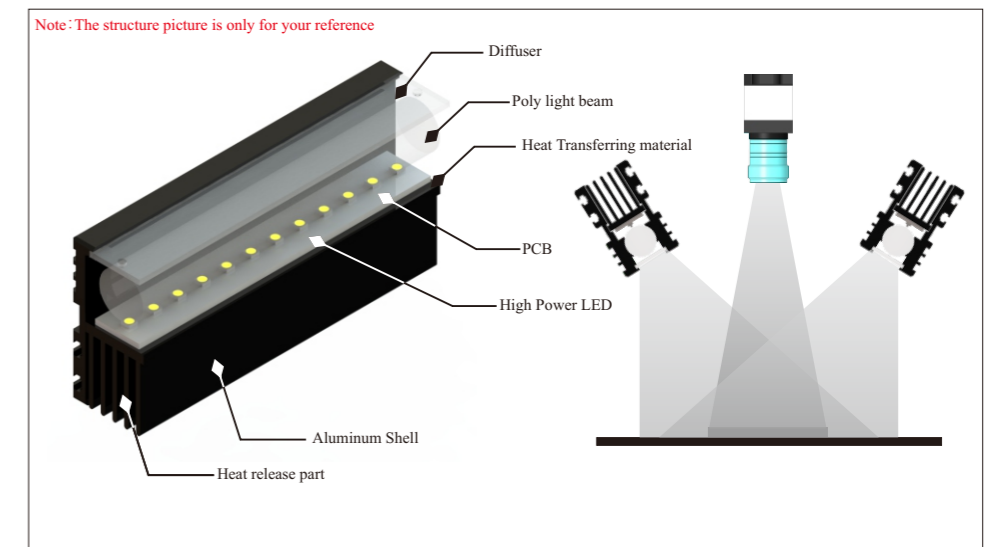
- OPT-LIG255
- length
 - high power bar light
 - OPT

Intensity is 3 times higher than standard one



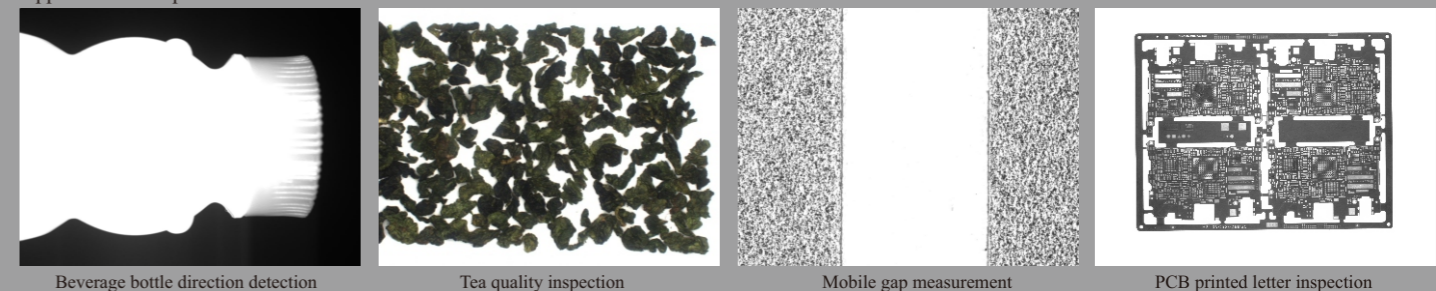
*Above data is just for reference

Length more than 2000mm can be customized easily



Structure display and working way

Application example



Beverage bottle direction detection

Tea quality inspection

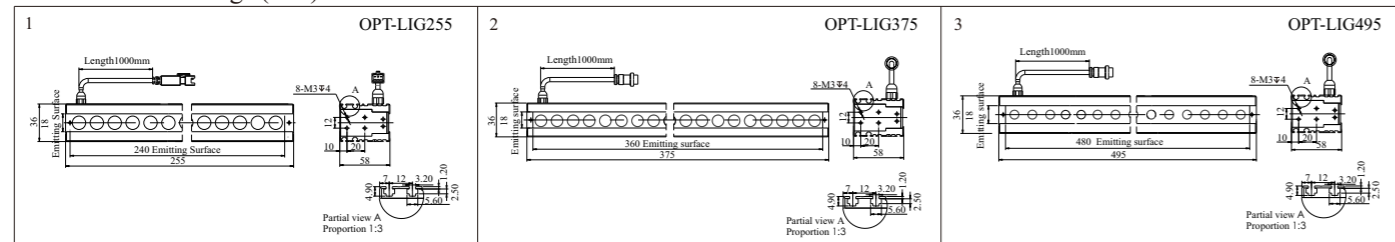
Mobile gap measurement

PCB printed letter inspection

Model Table

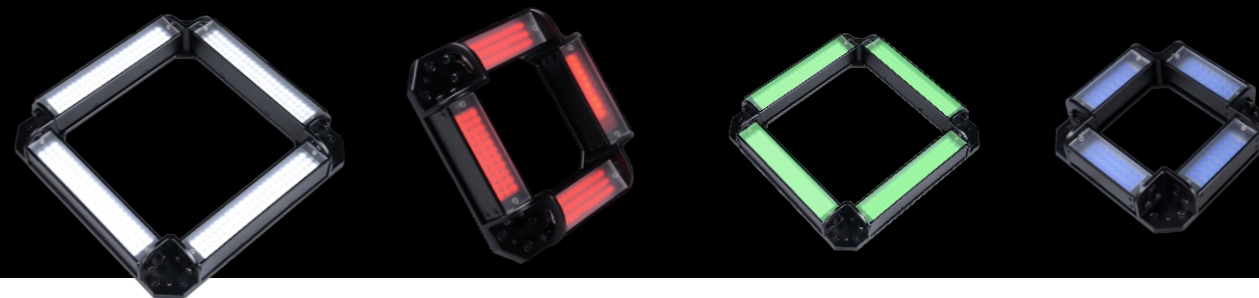
Model	Output Power ●●○	Output Power ●●●	Color	Size
OPT-LIG255	24V/14.4W	24V/9.6W	●●○●●	1
OPT-LIG375	24V/43.2W	24V/21.6W	●●○●●	2
OPT-LIG495	24V/57.6W	24V/28.8W	●●○●●	3

Dimensional drawings (mm)



Combined Bar Light OPT-LIM series

The well-combination of bar light has the advantage of freely angle adjustment and independently control.widely used and the first priority for the large square illumination.



Adjustable angle as your demands(0°-90°), suitable for kinds of application

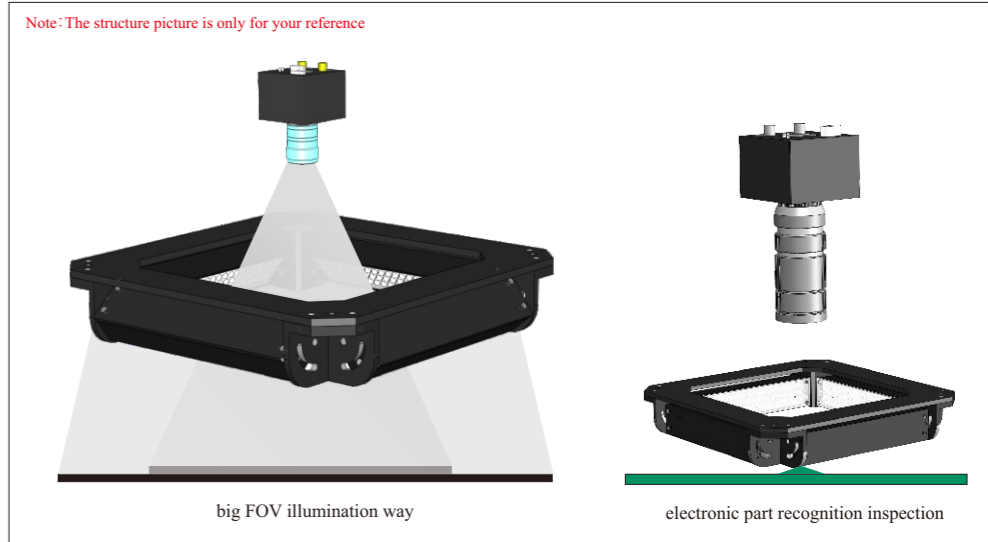
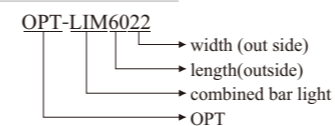
Combination of bar light, independently illumination on each side

Large square illumination, wide range of application

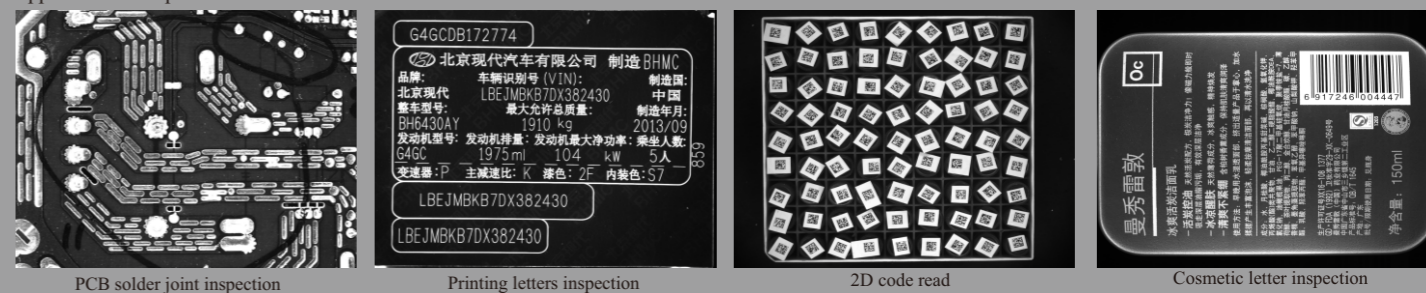
Application Area

- ◆ PCB inspection
- ◆ OCR on IC chips
- ◆ Solder inspection
- ◆ The position of mark
- ◆ Used to the microscopes illumination
- ◆ The illumination for the package label

Selection Guide



Application example



PCB solder joint inspection

Printing letters inspection

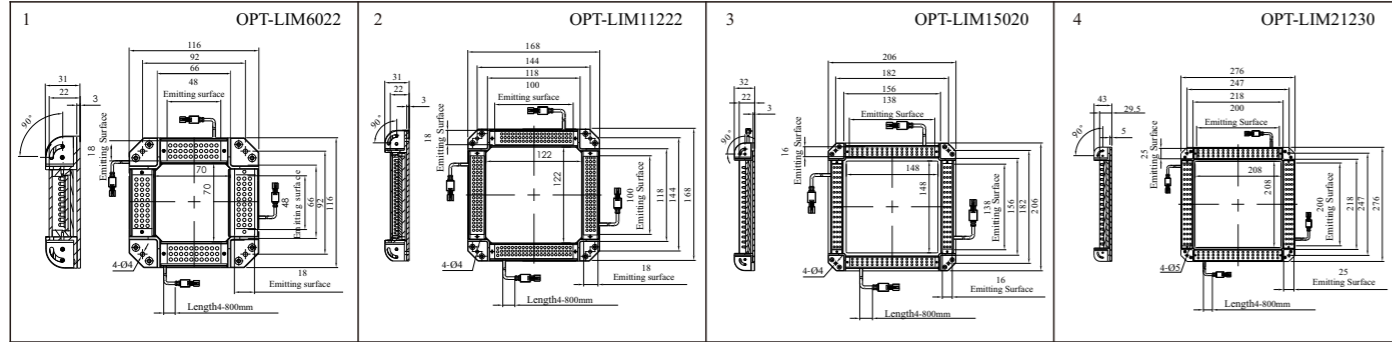
2D code read

Cosmetic letter inspection

Model Table

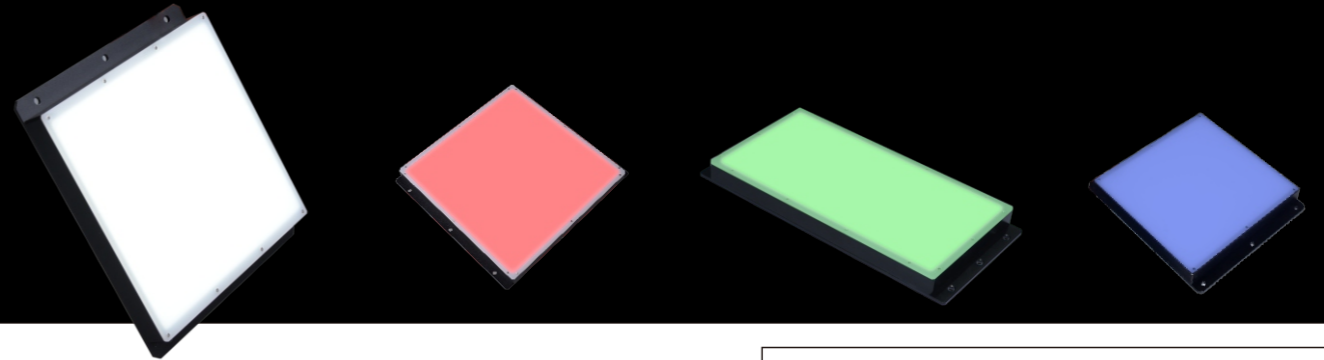
Model	Output Power ●●○	Output Power ●●●	Color	Size
OPT-LIM6022	24V/2.9W	24V/3.2W	●●●●	1
OPT-LIM11222	24V/8.2W	24V/4.8W	●●○●●	2
OPT-LIM15020	24V/11.0W	24V/6.2W	●●○●●	3
OPT-LIM21230	24V/28.8W	24V/19.2W	●●○●●	4

Dimensional drawings (mm)



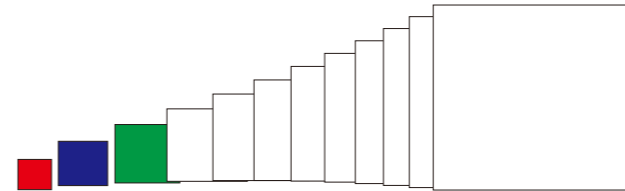
Bottom Back Light OPT-FL series

Applied in the large area illumination, to enhance the high contrast silhouettes for high speed machine



The dimension is from 30*30 to 500*500mm

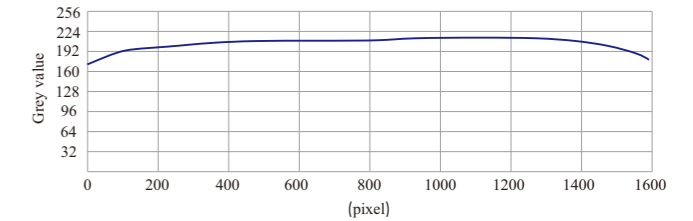
other size can be customized
Available color is red, blue, green, white
size and color combined can be customized



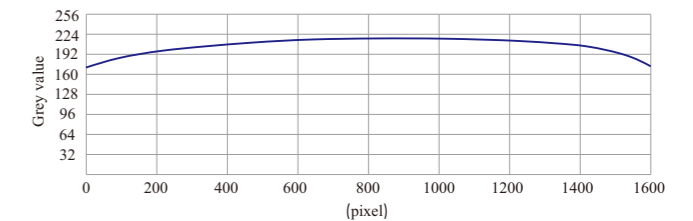
Illumination area & uniformity

Keep the same uniformity for different illumination area size

Uniformity of large size (500mmx500mm)



Illumination area (30mmx30mm)



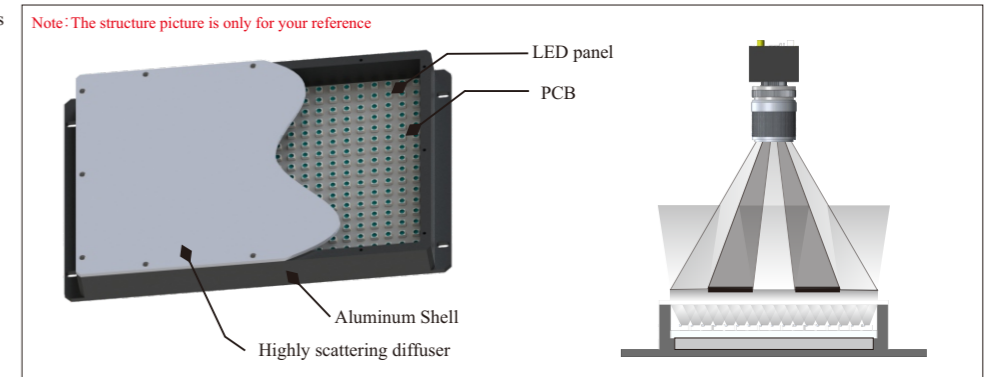
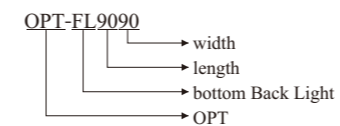
Use CCD camera to grab the picture and analysis the grey value, above drawing is the average grey value

*Above data is just for reference

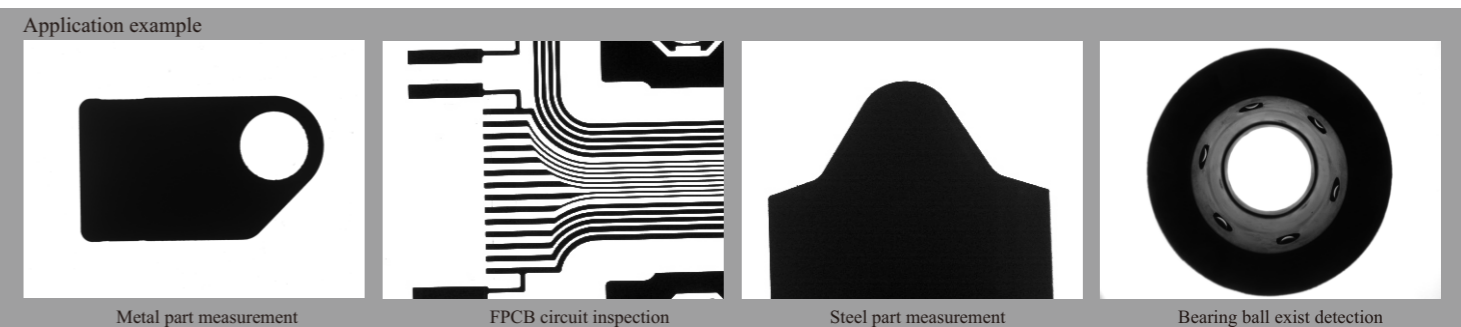
Application Area

- ◆ Measurement inspection of mechanical components
- ◆ Inspection of IC pins and electronic components
- ◆ Inspection of transparent film
- ◆ Detect scratching on transparent objects

Selection Guide



Structure display and illumination picture



Metal part measurement

FPCB circuit inspection

Steel part measurement

Bearing ball exist detection