

FASTCAM MC2

HIGH PERFORMANCE H.S. VIDEO SYSTEM



High Speed Video System developed specifically for production line and automation fault finding

The FASTCAM MC2 has been designed to meet the requirements of development and production engineers in manufacturing and automation environments:

- A robust system with one or two remote camera heads that are small and light weight enabling it to be positioned in inaccessible and space limited environments.
- A light sensitive CMOS imaging sensor allowing images to be captured with minimal additional lighting.
- High frame rates and image resolution to allow clear visualization and motion analysis.
- Operational features necessary for recording in production environments including optional handheld remote controller with built-in LCD display.
- Gigabit Ethernet interface, complete with automatic download to users network.

Benefits

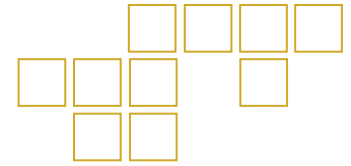
- Two small and lightweight camera head types:
 - Cube Cam: 35mm (1.38") x 35mm (1.38") x 33.3 mm (1.31")
 - Pencil Cam: 23mm (0.91") x 23.2mm (0.91") x 77.1mm (3.04")
- 2,000 fps (frames per second) recording rate at full image resolution
- Rugged design for use in industrial environments. Remote camera head with 7 meter cable allows positioning in difficult to access locations
- Three model options (monochrome or color):
 - **Model 500**: 512 x 512 pixel resolution at frame rates up to 500 fps
 - **Model 2K**: 512 x 512 pixel resolution at frame rates up to 2,000 fps
 - **Model 10K**: 512 x 512 pixel resolution at frame rates up to 2,000 fps and frame rates up to 10,000 fps with reduced image resolution
- 1GB (4 seconds recording time at 1,000 fps) or 2GB (8 seconds recording time at 1,000 fps) memory
- Gigabit Ethernet control via Photron FASTCAM Viewer (PFV) software
- Optional handheld remote controller with integrated 5" LCD monitor for simple control of all functions and viewing of live and recorded images
- High speed video can be synchronized with external analog data from load cells or accelerometers with optional DAQ

Photron
www.photron.com



FASTCAM MC2

HIGH PERFORMANCE VIDEO SYSTEM



Specifications

MODEL			FRAME RATE (fps)	MAX RESOLUTION		EXPOSURE TIME	RECORD DURATION			
							TIME (Sec.)		FRAMES	
							1GB	2GB	1GB	2GB
10K	2K	500	250	512	512	6 μ s 1/160,000sec	16.37	32.75	4,092	8,188
			500	512	512		8.18	16.38	4,092	8,188
			1,000	512	512		4.09	8.19	4,092	8,188
			2,000	512	512		2.05	4.09	4,092	8,188
			3,000	512	352		1.98	3.97	5,952	11,909
			4,000	512	256		2.05	4.09	8,184	16,376
			8,000	512	128		2.05	4.09	16,368	32,752
			10,000	512	96		2.18	4.37	21,824	43,669

- Sensor** CMOS (Bayer system color, single sensor) with 10 μ m pixel
- Shutter** Global electronic shutter from 20ms to 6 μ s
- Saved Image Formats** JPEG, AVI, TIFF, BMP, RAW, PNG, MOV, and FTIF. Images can be saved with or without image or comment data
- Phase Lock** Enables cameras to be synchronized precisely together to a master camera or external source
- Triggering** Selectable positive or negative TTL 5Vp-p, or switch closure
- Lens Mount** Cube Cam: C-mount
Pencil Cam: NF-mount
- Data Display** Frame Rate, Shutter Speed, Trigger Mode, Date or Time (can be switched), Status (Playback/Record), Real Time, Frame Count and Resolution
- Video Output** NTSC or PAL. Live video during recording. Ability to zoom, pan and scroll within image via keypad
- Recording Modes** Start, End, Center, Manual, Random
- Camera Control** Through a Gigabit Ethernet PC interface and optional RS-422 keypad
- Camera Cable Length** 7 meters (23')
- Dimensions and Weight** Processor: 195mm (7.68")H x 159mm (6.26")W x 130mm (5.12")D *excluding protrusions Weight: 5 kg (11 lbs)
Cube Cam: 35mm (1.38")H x 35mm (1.38")W x 33.3 mm (1.31")D *excluding protrusions Weight: 90g (0.2 lbs)
Pencil Cam: 23mm (0.91")H x 23.2mm (0.91")W x 77.1 mm (3.04")D *excluding protrusions Weight: 145g (0.3 lbs)
- Power Requirements** DC operation 18 - 36 VDC, 45VA, 100V - 240V AC, 50 - 60Hz power supply provided
- Video Output** NTSC, PAL RS170 video output



Specifications subject to change without notice

PHOTRON USA, INC.
9520 Padgett Street, Suite 110
San Diego, CA 92126-4446
USA
Tel: 858.684.3555 or 800.585.2129
Fax: 858.684.3558
Email: image@photron.com
www.photron.com

PHOTRON (EUROPE) LIMITED
The Barn, Bottom Road
West Wycombe, Bucks, HP14 4BS
United Kingdom
Tel: +44 (0) 1494 481011
Fax: +44 (0) 1494 487011
Email: image@photron.com
www.photron.com

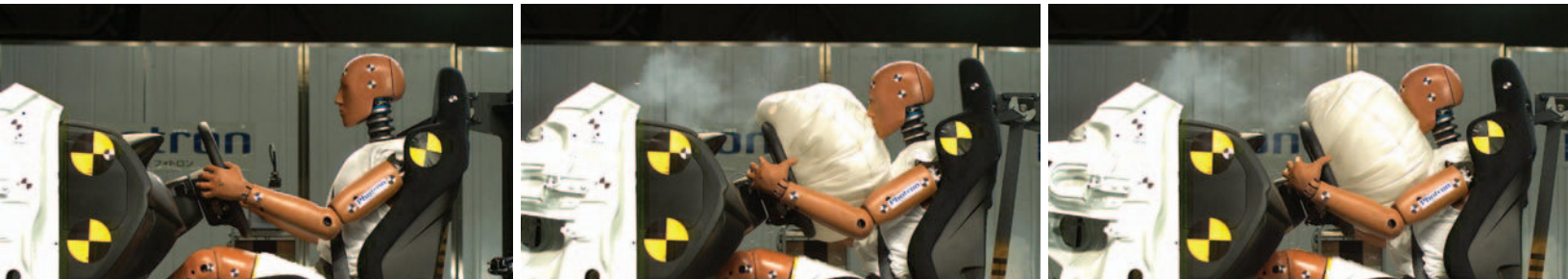
PHOTRON LIMITED
Fujimi 1-1-8
Chiyoda-Ku, Tokyo 102-0071
Japan
Tel: +81 (0) 3 3238 2107
Fax: +81 (0) 3 3238 2109
Email: image@photron.co.jp
www.photron.co.jp

Photron

SLOW MOTION IMAGING SOLUTIONS

FASTCAM MH4

HIGH-G PERFORMANCE FROM SUB-COMPACT MULTI CAMERA HEADS



On-board, Multi-head High-Speed Video System developed specifically for Automotive Safety Testing

The world's smallest camera head design providing high frame rates and excellent light sensitivity

Photron introduces the FASTCAM MH4 with four tiny cameras, each less than one and a half inches (35mm) cubed, providing incredibly light sensitive performance up to two thousand full resolution fps (frames per second). The cameras are connected to a compact processor unit; complete with battery backup for thirty minutes data retention in the event of power loss, via light-weight, flexible cables, and are available with either one or two Gigabyte onboard memory configurations dependent on your event duration.

The FASTCAM MH4 is engineered referring to SAE-J211 for operation under the most testing of environments and can operate under shock forces as massive as 100G's in any axis. The sub-compact camera heads are available with high-G lens mounts but are still lightweight enough to fit in just about any onboard location without requiring serious reinforcements. Camera heads are available in two different configurations (top cable or rear cable), and camera cable connectors are available in three different arrangements, so that cameras can be mounted in just about any configuration or orientation, ensuring you get good looking results every time.

An additional high-G battery pack is available for tests where supplying external power through costly and potentially weak umbilical cables is undesirable, or where the security of an uninterrupted power supply unit (UPS) is advantageous.

Benefits

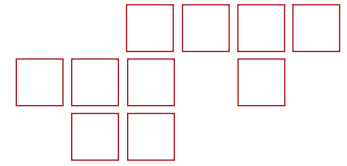
- Small and lightweight camera head 35mm x 35mm x 34mm, weight 90g per head (excluding lens)
- Supports from one to four camera heads per processor
- High-G; 100G for 10ms in any axis
- 512 x 512 pixel resolution up to 2,000 fps
Reduced resolution up to 10,000 fps
- Gigabit Ethernet (1000BASE-T) interface
- Optional remote keypad with integrated 5" LCD video monitor for simple control of all functions and rapid switching between camera heads
- Optional Hi G battery pack for operation where external power is unavailable



Photron

www.photron.com

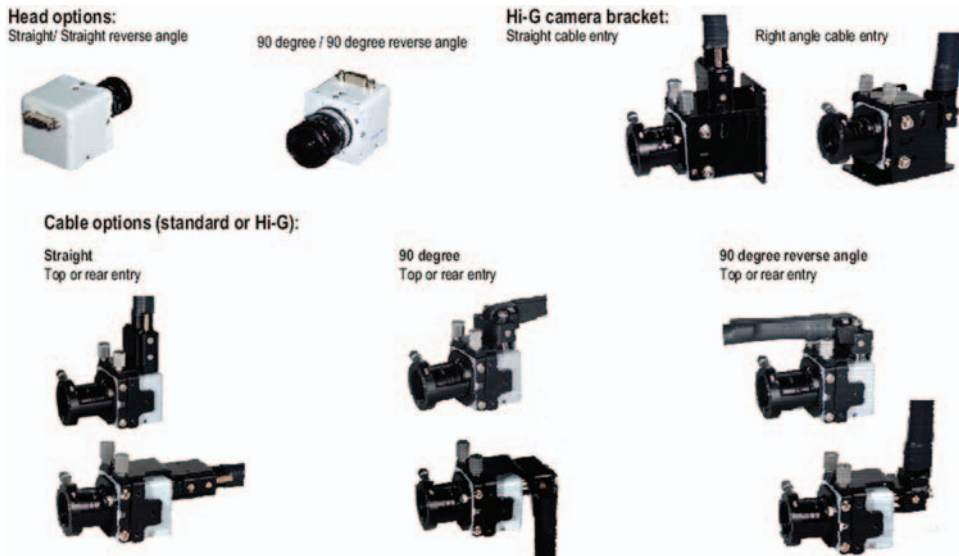
FASTCAM MH4



Specifications

FRAME RATE (fps)	MAX RESOLUTION (pixels)	EXPOSURE TIME	RECORD DURATION (seconds) 1GB / 2GB memory	RECORD DURATION (frames) 1GB / 2GB memory
250	512x512	1/frame rate to 6µS	16.0 / 32.0	4,092 / 8,184
500	512x512		8.0 / 16.0	4,092 / 8,184
1,000	512x512		4.0 / 8.0	4,092 / 8,184
2,000	512x512		2.0 / 4.0	4,092 / 8,184
3,000	512x352		1.9 / 3.8	5,693 / 11,386
4,000	512x256		2.0 / 4.0	8,184 / 16,368
8,000	512x128		2.0 / 4.0	16,368 / 32,736
10,000	512x96		2.2 / 4.4	21,824 / 43,648

Sensor	CMOS (Bayer system color, single sensor) with 10µm pixel, global electronic shutter and over-exposure protection	Video Output	NTSC or PAL. Live video during recording. Ability to zoom, pan and scroll within image via keypad
Shutter	Global electronic shutter from 20ms to 6µs	Recording Modes	Start, End, Center, Manual, Random
Saved Image Formats	JPEG, AVI, TIFF, BMP, RAW, RAWW, PNG, and FTIF	Camera Control	Through PFV software via Gigabit Ethernet and RS422 keypad with built in LCD monitor
Phase Lock	Enables cameras to be synchronized precisely together to a master camera or external source	Shock	100G @ 10ms 6 axis
Triggering	Selectable positive or negative TTL 5Vp-p, switch closure	Dimensions and Weight	Processor: 150mm (5.91")H x 245mm (9.65")W x 180mm (7.09")D *excluding protrusions Weight: 16.75 lbs (7.6kg) Camera Head: 35mm (1.38")H x 35mm (1.38") W x 34mm (1.34")D *excluding protrusions Weight: 0.66 lbs (0.3 kg)
Lens Mount	NF-mount, C-mount (Optional)	Power Requirements	100V - 240V AC , 65VA, 50-60Hz optional DC operation 22-32 VDC
Data Display	Frame Rate, Shutter Speed, Trigger Mode, Date or Time (can be switched), Status (Playback/Record), Real Time, Frame Count and Resolution		
Video Formats	NTSC, PAL RS170 video output		



PHOTRON USA, INC.
9520 Padgett Street, Suite 110
San Diego, CA 92126-4446
USA
Tel: 858.684.3555 or 800.585.2129
Fax: 858.684.3558
Email: image@photron.com
www.photron.com

PHOTRON (EUROPE) LIMITED
The Barn, Bottom Road
West Wycombe, Bucks, HP14 4BS
United Kingdom
Tel: +44 (0) 1494 481011
Fax: +44 (0) 1494 487011
Email: image@photron.com
www.photron.com

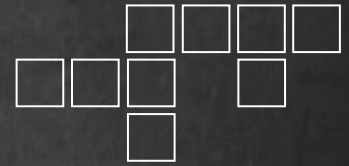
PHOTRON LIMITED
Fujimi 1-1-8
Chiyoda-Ku, Tokyo 102-0071
Japan
Tel: +81 (0) 3 3238-2106
Fax: +81 (0) 3 3238 2109
Email: image@photron.co.jp
www.photron.co.jp

Photron

SLOW MOTION IMAGING SOLUTIONS

FASTCAM Multi

MULTI HEAD HIGH-SPEED CAMERA SYSTEM



Compact Camera Heads provide Big Performance

The FASTCAM Multi is a unique, high-speed camera system featuring one or two compact and lightweight camera heads tethered to a remote processor. The small camera heads allow image capture at up to 6,000 frames per second (fps) at megapixel resolution within confined areas that are not large enough to support the size of a "typical stand alone" high-speed camera. The separation of the camera head from the processor ensures that image data is safely retained in the processor, even if the camera head is damaged or destroyed during an explosive event. No other high speed camera has the combination of high resolution, frame rate performance and small camera size that is available with the FASTCAM Multi.

Despite the small size of its camera head(s), the FASTCAM Multi provides a very high level of imaging performance. The system offers up to 4,800 fps at full 1,280 x 1,024 pixel resolution and 6,000 fps at 720 High Definition (HD) resolution, and with reduced resolution to 750,000 fps. A global shutter provides blur free 12-bit images with exposure times as short as 1 microsecond. The FASTCAM Multi's CMOS sensor features 10 micron square pixels that deliver light sensitivity of ISO 10,000 monochrome and ISO 5,000 color according to the ISO 12232 Ssat standard.

The FASTCAM Multi is compatible with a large quantity of off-the-shelf commercial lenses, including C mount, Nikon F (G-type) and Micro Four Thirds (MFT) lens mounts. Due to the small pixel pitch of the FASTCAM Multi's sensor, the camera is capable of utilizing 1" C mount lenses without the appearance of vignetting. Its distinctive feature set makes the FASTCAM Multi well-suited for many different applications including microscopy, detonation and explosives testing, off board automotive safety testing and more.

Target applications include:

- Biomechanics
- Fluid dynamics
- Defense and aerospace research
- Life sciences
- Material science
- Digital Image Correlation

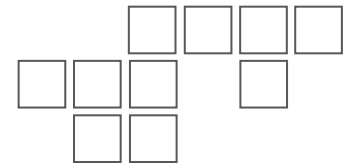
Benefits

- Frame Rate Performance examples:
 - 4,800 fps at 1,280 x 1,024 pixel resolution
 - 6,000 fps at 1,280 x 824 pixel resolution
 - 10,000 fps at 896 x 488 pixel resolution
 - 16,000 fps at 1,280 x 296 pixel resolution
 - 150,000 fps at 1,280 x 24 pixel resolution
 - 750,000 fps at 640 x 8 pixel resolution
- One or two compact and lightweight camera heads
 - 69mm (2.72")W x 70mm (2.76")H x 151.4mm (5.96")D
 - 0.98kg (2.16 lbs.)
- Durable 5 meter (standard) and 10 meter (optional) cables
- Retention of video data if camera head is damaged or destroyed
- Electronics protected from dirt and dust
- Sensitivity: ISO 12232 Ssat standard
 - ISO 10,000 monochrome
 - ISO 5,000 color
- Compatibility with 1 inch C mount, Nikon G type and Micro Four Thirds (MFT) lenses
- 8GB, 16GB and 32GB memory options (per camera head) and high performance Gigabit Ethernet interface to PC



FASTCAM Multi

MULTI HEAD HIGH-SPEED CAMERA SYSTEM



Specifications: Partial Frame Rate / Recording Duration Table

FRAME RATE (fps)	MAXIMUM RESOLUTION Horizontal Vertical		RECORD DURATION (12-BIT)					
			TIME (Sec.)			FRAMES		
			8GB	16GB	32GB	8GB	16GB	32GB
4,800	1,280	1,024	0.91	1.82	3.64	4,363	8,733	17,471
5,000	1,280	1,000	0.89	1.79	3.58	4,467	8,942	17,890
6,000	1,280	824	0.90	1.81	3.62	5,422	10,853	21,712
8,000	1,280	616	0.91	1.81	3.63	7,254	14,518	29,043
10,000	1,280	488	0.92	1.83	3.67	9,157	18,326	36,662
12,500	1,280	384	0.93	1.86	3.73	11,638	23,290	46,591
16,000	1,280	296	0.94	1.89	3.78	15,098	30,214	60,443
150,000	1,280	24	1.24	2.48	4.97	186,240	372,655	745,482
750,000	640	8	1.49	2.98	5.96	1,117,455	2,235,937	4,472,899

FASTCAM Multi Camera Head HS-01

Sensor	1,280x1,024 pixels, 10um pixel size, 12-bit ADC (Bayer system color, 36 bit single sensor)	Housing Design	RV (sealed body with fan) *fan stop feature is available
Shutter	Global electronic shutter from 16.6ms to 1us dependent on frame rate	Mounting	1xM3, 1x1/4, 1x3/8
Lens Mount	F (G type lens mount compatible), C, MFT (optional)	Dimensions	69mm (2.72") (W) × 70mm (2.76") (H) × 151.4mm (5.96) (D)
Sensitivity	ISO 10,000 (mono), 5,000 (color) ISO 12232 Ssat Standard	Weight	0.98kg (2.16lbs) (excluding protrusions)
		Operating Temperature	0 - 45 degrees (32 - 104 degree F)

FASTCAM Multi Camera Cable

Type of cable	Multi Optical Camera Cable	Diameter	12.5mm (excluding connector)
Length	5m/10m *Special long distance will be available	Minimum bending radius	125mm

FASTCAM Multi Main Unit

Memory	8GB (4,363 frames @ maximum resolution) or 16GB (8,733 frames @ maximum resolution) memory options 32GB (17,471 frames @ maximum resolution) memory options	Video Out	Mini Display Port *format is based on HDMI, HD-SDI (*Coming soon)
Camera Control	Software control through High speed Gigabit Ethernet or Remote Keypad (*Coming soon)	Saved Image Formats	JPEG, AVI, TIFF, BMP, RAW, PNG, MOV and FTIF. Images can be saved with or without image or comment data
No. of Camera Port	1ch or 2ch selectable	Data Display	Frame Rate, Shutter Speed, Trigger Mode, Date or Time, Status (Playback/Record), Real Time, Frame Count and Resolution
Trigger Modes	Start, Center, End, Manual, Random, Random Reset, Random Center, Random Manual	Housing design	RV (sealed body with fan)
I/O	Input: Trigger (TTL/Switch), Sync, Ready, Event, IRIG Output: Trigger, Sync, Ready, Rec, Expose, IRIG_1PPS	Operating Temperature	0 - 45 degrees (32 - 104 degree F)
Phase Lock	Enables cameras to synchronized precisely together to a master camera or external source, such as IRIG time codes	Dimensions	260mm (10.24") (W) × 140mm (5.51") (H) × 223mm (8.78") (D)
Timing	Internal clock or external source <0V~+12V (H level+2.5~+12V) *Variable frequency synchronization is available>	Weight	7.8kg (17.2lbs) (excluding protrusions)
		Power Requirements	100V-240V AC 200W , 50-60Hz DC operation 20-34V, 180VA

Specifications subject to change without notice

PHOTRON USA, INC.
9520 Padgett Street, Suite 110
San Diego, CA 92126-4446
USA
Tel: 858.684.3555 or 800.585.2129
Fax: 858.684.3558
Email: image@photron.com
www.photron.com

PHOTRON (EUROPE) LIMITED
The Barn, Bottom Road
West Wycombe, Bucks, HP14 4BS
United Kingdom
Tel: +44 (0) 1494 481011
Fax: +44 (0) 1494 487011
Email: image@photron.com
www.photron.com

PHOTRON LIMITED
Fujimi 1-1-8
Chiyoda-Ku, Tokyo 102-0071
Japan
Tel: +81 (0) 3 3238 2107
Fax: +81 (0) 3 3238 2109
Email: image@photron.co.jp
www.photron.co.jp

Photron

SLOW MOTION IMAGING SOLUTIONS