

Orca IP67 (Nema 4 + 6) Industrial Camera Enclosure



IP67 protection for cameras up to 62 x 62mm cross section

Technical Highlights:

- **Robust build:** aluminium extrusion profile.
- **Small form factor:** easy to integrate into existing machines.
- **Flexible camera positioning:** angle and position
- **Dovetail profiles enable robust enclosure mounting:** on all 4 sides along the entire profile. Mounting brackets resist a displacement force of up to 3000N! Simple adjustment of working distance.
- **Compatible with a large range of accessories:** various mounting and adjustment brackets, triangulation set-ups, water cooling, controlled heating plate, wind curtain, positioning ring for simple camera replacement and more.
- **High chemical resistance** by using Viton, EPDM and TPE sealing materials. Contact us with special requirements!
- **Special enclosures:** for Sick Ranger, Basler Runner/Aviator, Sony FCB block cameras or FLIR A300 thermal imaging cameras.

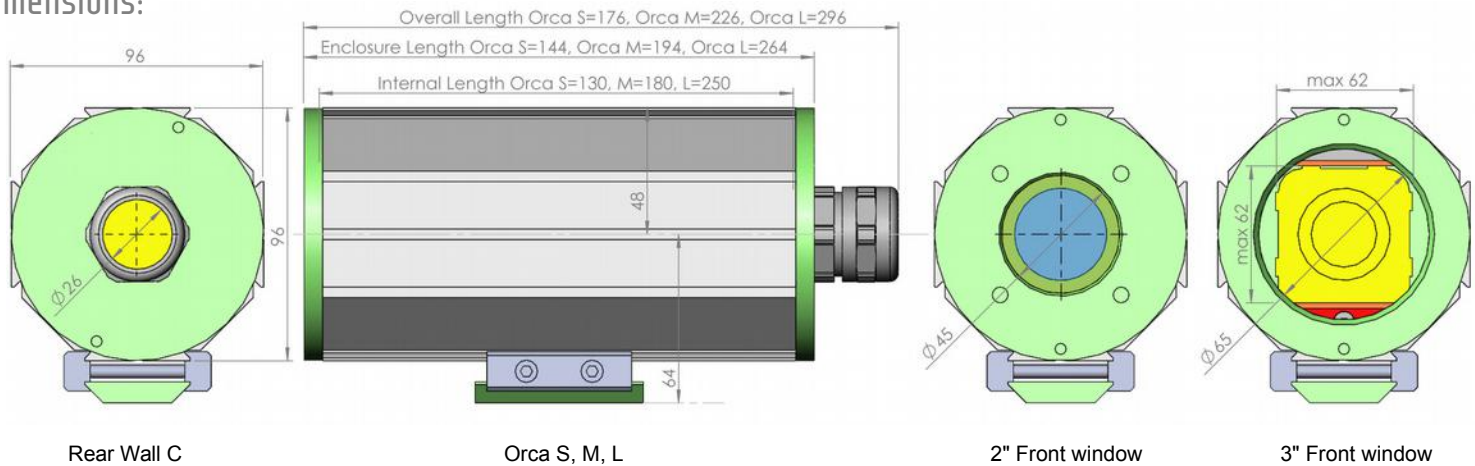


- **Assembly of ring lights with up to 78mm Ø:** directly into the 3" front lid possible.
- **Vibration proof camera mounting with good heat dissipation:** thanks to the patented Quick-Lock / Heat-Guide mounting system.

Degree of protection	Dimensions	Material details
<ul style="list-style-type: none"> ■ IP66 - Protection from high pressure water jets (Nema 4) ■ IP67 - Protection from occasional submersion (Nema 6) <ul style="list-style-type: none"> ○ Up to 1h duration ○ Up to 1m water depth 	<ul style="list-style-type: none"> ■ For cameras up to 62 x 62mm cross section (max. 85mm diagonal) ■ For connectors up to 26mm Ø ■ Orca S, length: 176, 130 (internal) ■ Orca M, length: 226, 180 (internal) ■ Orca L, length: 296, 250 (internal) ■ Custom up to 450mm internal length ■ Window aperture of 2" windows: 45mm Ø ■ Window aperture of 3" windows: 65mm Ø 	<ul style="list-style-type: none"> ■ Enclosure: anodised aluminium ■ Window: BK7, double-sided broadband anti-reflective coating ■ Window seal: Viton ■ Enclosure seal: EPDM (Viton at request) ■ Cable gland seal: TPE (TPEV at request)

Orca IP67 (Nema 4 + 6) Industrial Camera Enclosure

Dimensions:

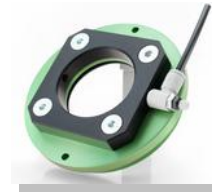


Accessories:

- **Mounting kits**
- **Wind curtain and air nozzle:** for dirty environments
- **Water cooling and heating**
- **90° deflection mirror**
- **Adapter plate for 3" ring light:** in housing lid
- **Positioning ring:** for repeatable camera assembly
- **Laser-Triangulation building kit**
- **60mm Enclosure extension:** for easier lens adjustment



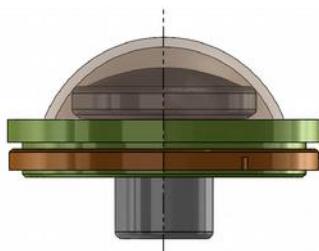
Ring light mount



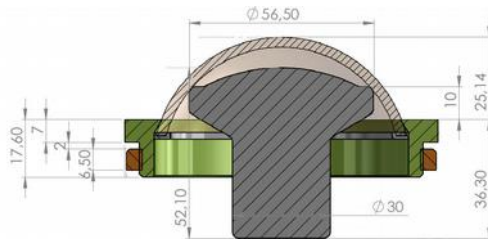
Wind curtain



90° deflection mirror



BK7 Dome window front lid for fisheye lenses with up to 200° image angle



Rear walls A, C, D and E (non rotating inner plate)

Order number key:

Example: Orca L, camera height h: 52mm, 2" front window with rear wall C, length 250mm:

Order Number	2	5.2	4	2		.250
	↓	↓	↓	↓		↓
Enclosure	Camera height h in cm	Orca	2" window with rear wall	3" window with rear wall	Length	
	Standard for h = 4.0 – 6.2cm		A: 0 C: 1 D: 2	A: 5 C: 6 D: 9	S: 130 M: 180 L: 250	
			Surcharge rear wall E: Order Number 20.040.014			

Please order separately:

Accessory	Order Number	Accessory	Order Number
Adapter plate for camera height h = 29 - 39mm	20.040.001	Mounting tool for Orca lids (please add to your first order)	90.000.004

© autoVimation 2015 subject to technical change without notice. No liability is accepted for possible errors.