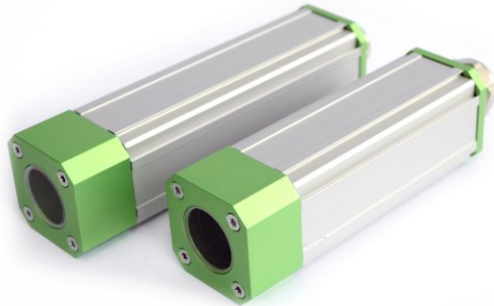




Benefits:

- For cameras up to 30 x 30mm cross section
- Robust construction
- Compact size
- Small dead weight
- High IP protection class
- Flexible camera positioning
- High chemical resistance
- Vibration-proof mounting
- Camera mount included
- Excellent heat dissipation
- Front and back side camera assembly possible



Technical Details:

Camera Size	29 x 29mm 30 x 30mm
Max. Lens Diameter	39mm
Inner Length	146mm (Size S) 176mm (Size M)
Enclosure Dimensions (w x h x l, without cable gland)	50 x 50 x 156mm (Size S) 50 x 50 x 186mm (Size M)
Window Aperture	28mm
Window Material	Borosilicate, BK7
Window Coating	Double sided AR
Window Seal	Hytrell
Protection Class	IP66 (Nema 4)

Weight (incl. camera mount)	Approx. 420g (Size S) Approx. 465g (Size M)
Enclosure Material	Anodized Aluminum
Enclosure Seals	NBR
Cable Gland Aperture (max. connector size)	20mm (Rear Wall A) 16.5mm (Rear Wall B) 20.5mm (Rear Wall C)
Cable Diameter	4-6.5mm (Rear Wall B) Self drilling (Rear Wall C)
Cable Gland Seal	TPE



The camera mount guarantees excellent heat dissipation

**Order Numbers:**

Colibri S		
Camera Height	Rear Wall	Order Number
29mm	A	22.900.120
	B	22.901.120
	C	22.902.120
30mm	A	23.000.120
	B	23.001.120
	C	23.002.120

Colibri M		
Camera Height	Rear Wall	Order Number
29mm	A	22.900.150
	B	22.901.150
	C	22.902.150
30mm	A	22.900.150
	B	23.001.150
	C	23.002.150

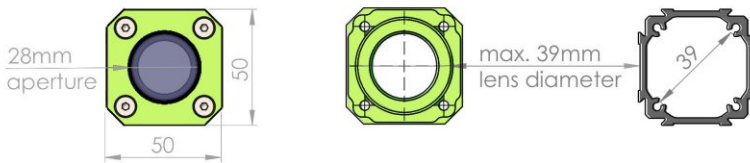
Accessories:

Product	Image	Order Number
Colibri Air Nozzle		50.100.023
90° Deflection Mirror + Adapter required		20.020.004 + 10.062.979
30mm to 40mm Adapter Bracket		10.062.979
Corrugated Tube 28mm		20.000.006
Mounting Kit 21		5.210.000

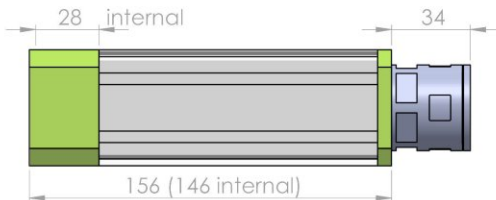
Product	Image	Order Number
Mounting Kit 24		5.240.000
Mounting Kit 26		5.260.000
Mounting Kit 27		5.270.000
Mounting Kit 28		5.280.000
Mounting Kit 29		5.290.000



Front Lid



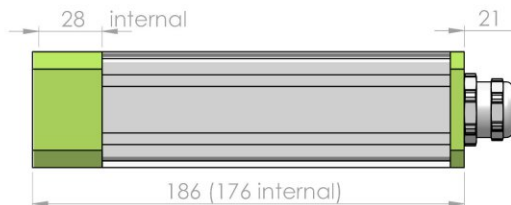
Size S



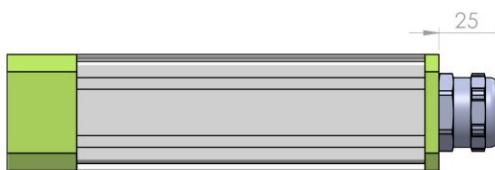
Rear Wall A



Size M



Rear Wall B



Rear Wall C

